

Data Sheet

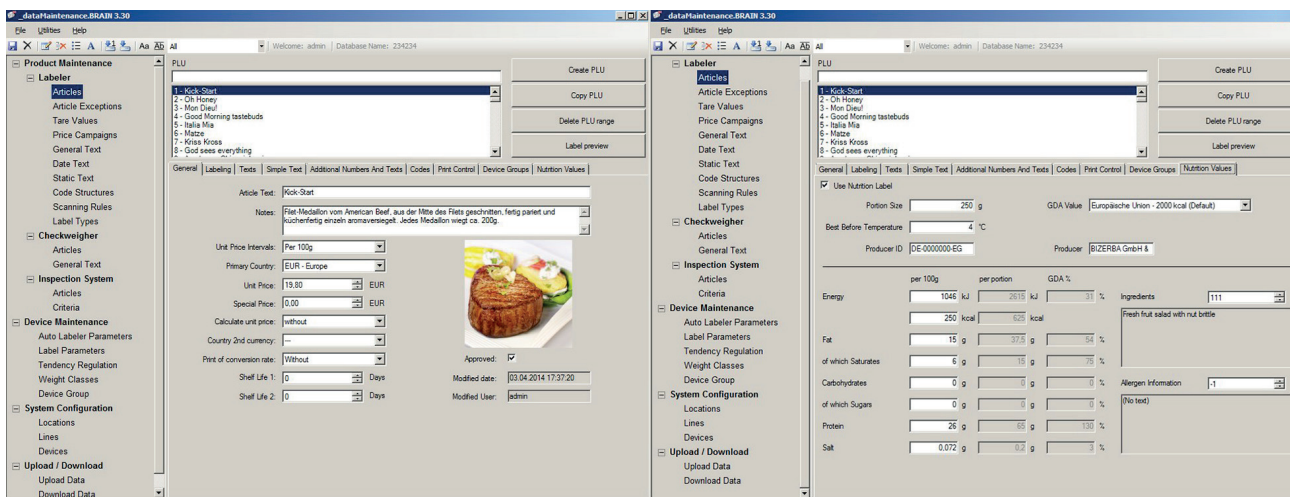
_dataMaintenance.BRAIN

BIZERBA

With the master data maintenance tool _dataMaintenance.BRAIN you centrally create and maintain article data, incl. parameters for labels, and send them to Bizerba devices. By means of the quality gate you ensure that only controlled data are sent to production.

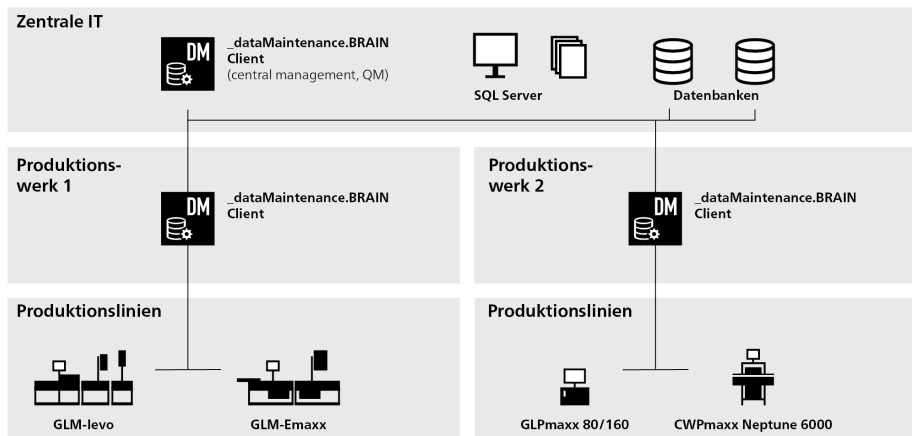
Product Description

The master data maintenance tool _dataMaintenance.BRAIN is closely connected to Bizerba devices and applications. The data structure of every Bizerba price labeling system and checkweigher is optimally displayed in the user friendly surface. The compatibility with Windows® 8.1 is future-oriented. According to your company's size the adequate software version (Basic, Standard or Professional) is available for you.



USP

- Simple maintenance of articles
- Central master data administration incl. user management
- Flexibility of use with Bizerba devices
- Supports you in the realization of the EU Food Information Regulation by means of simple data input in nutrition value charts.
- Easy configuration of 2D code content, e.g. the internet address included in a QR Code
- Quality gate as a step of article approval in your production process
- Automatic data synchronization of Bizerba devices, e.g. at night
- Synchronization of device clock time



Product value

By deploying _dataMaintenance.BRAIN you safeguard devices with consistent data, e.g. articles and texts. A simple data administration with user defined permits and quality gates optimizes your working processes. Thus you prevent wrong labelings and resulting complaints.

Functions

- Product administration (PLUs, general texts, data texts, statistic texts)
- Device administration (automate parameters, label parameters, tendency control, weight classes)
- System configuration (groups, machine groups, lines)
- Upload/download of data to Bizerba devices (data, price campaigns, device currentness)
- Automatic calculation of GDA values and data of the portion size by reference to data input per 100 g

Features



Setup for
64 bit



Setup for
32 bit



Central
administra-
tion

Members of the Bizerba Group

Bizerba GmbH & Co. KG

Wilhelm-Kraut-Straße 65
72336 Balingen
Deutschland
T +49 7433 12-0
F +49 7433 12-2696
marketing@bizerba.com

www.bizerba.com