

# Data Sheet

## GLM-Bmaxx 150F / 350 / 700

# BIZERBA

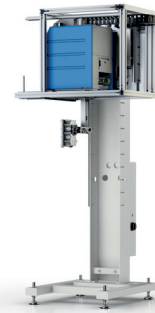
**GLM-Bmaxx ... simply a better experience with every label ... The automatic Bizerba weigh price labeler GLM-Bmaxx makes things easy for you: It can be easily integrated into conveyor systems and data systems and thus ensures correct labeling from the case to the pallet. And with the Intel® Atom™ it fulfils both current and future requirements.**



**More information**  
High performance  
with a wide range of  
solutions and options.

### Product description

The models of the GLM-Bmaxx series can be integrated as stand-alone labelers anywhere in your conveyor systems and are controlled by EDP systems. Thanks to the Bizerba system design, they are also suitable for use as total value printers for price labeling lines and checkweigher lines. The combinable Ethernet-capable labelers are ideal for use with the dynamic Bizerba scale CWL Eco or in Bizerba DWS (dimensioning, weighing and scanning) systems. In the GLM-Bmaxx, label rolls with a diameter of up to 300 mm can be processed. Thus retrofitting time is reduced - especially with large labels. The printers are network compatible and can also be controlled directly via the Internet. The new pc-based hardware provides more memory space and fast label data processing. The operating terminal GT-7C with color display can be operated ergonomically and thus reduces operating errors. Optionally, an operating terminal with color touch display is available.



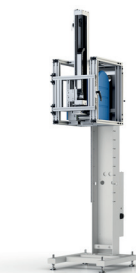
GLM-Bmaxx 150F

### Highlights

- Flexible fields of application for labeling of cases, boxes and pallets in production, warehousing and distribution logistics
- Up to 700 mm travel distance for the application of labels from the side and from above
- Swing arm applicator with 130 mm radius of action for labeling from above, below and the sides; in transport direction
- Label sizes up to 150 mm (W) x 200 mm (L)
- Operating terminal GT-7C with 7" color display, optionally GT-12E or GT-12C with 12" color touch display
- Printing of Unicode fonts
- 2 GB memory on board for layout and logos
- External USB port for trouble-free program updates, line backups and service printouts
- Thermal direct and thermal transfer print
- Printing and processing of any one-dimensional and two-dimensional standard barcodes, among other things data matrix and QR code
- Easy label roll change (Ø up to 300 mm)
- Servicing of printer unit without tools, e.g. replacing thermal printhead or pressure roller



GLM-Bmaxx 350S



GLM-Bmaxx 700T

### Options

- Thermal transfer device
- Printing mechanism 80 mm, optional width 104 mm
- 12" color touch display

### Bizerba GmbH & Co. KG

Wilhelm-Kraut-Straße 65  
72336 Balingen  
Germany  
T +49 7433 12-0  
F +49 7433 12-2696  
marketing@bizerba.com

[www.bizerba.com](http://www.bizerba.com)