

Fact Sheet

GLM-Ievo 100V

BIZERBA

GLM-Ievo – the standard in labeling.

"The Big 3": Performance, Plug-In®-Label and Quality-Check-Inside – this is the enormous benefit to meet your future requirements in labeling.



More information
High performance
with a wide range of
solutions and options.

Specifications	Facts	Details
Weighing range	6 kg 15 kg 6/15 kg	Calibrated value 2 g, min. FPV 500 Calibrated value 5 g, min. FPV 2.500 g Calibrated value 2/5 g, min. FPV 500 g/2.500 g
Weighing conveyor dimensions	W 400 mm x L 500 mm	
Print technology	Printing process Resolution Printing width Printing speed Label opening	Thermal direct transfer (optionally thermal transfer) 8 dot/mm (optionally 12 dot/mm) 80 mm (optionally 104 mm, 168 mm) max. 300 mm/s 120 mm
Labeler	Label size Label roll Thermal transfer ribbon	min. W 30 mm x H 30 mm up to W 120 mm x H 150 mm (depending on application type) Core diameter 76 mm (optionally 74-82 mm, 99-107 mm) Outer diameter 300 mm Core diameter 25,4 mm Outer diameter 81 mm
Labeler technology	Air jet application Stamp application Rotary applicator	Compressed air supply 6 bar, for top or bottom labeler Compressed air supply 2 bar, for top or bottom labeler
Labeler adjustment	Vertical adjustment Transverse adjustment	manual (optionally mechanical) manual (optionally mechanical)
Package size	min. W 40 mm x L 40 mm x H >1 mm max. W 400 mm x L 500 mm x H 250 mm	Depending on size of weighing conveyor
Labeling performance	max. 100 packs/min.	Depending on type of device, weight, package type and label size
Barcode types	all common barcode types	EAN/UPC 8, EAN/UPC 13, EAN/UPC 128, Code 2/5 int. Code 39, Code 128, GS1-128, PDF417, PDF417 + AI, GS1 DataBar Omni, GS1 DataBar, Data Matrix, QR-code
Supply voltage	400 V/50 Hz, 208 V/60 Hz	3* phases
Operating temperature	0 °C to 40 °C	Standby down to -10 °C
Humidity	20-90 %, non condensing	
Protection class	IP20 (Printer) IP54 (Scale, conveyor, control cabinet)	
Memory	500 MB	Compact Flash Karte

Operator panel

LCD display 12" with touchscreen function

optional iS70 industry terminal,
operating concept possible with one or more displays

Options**Facts****Details****I/O 8 inputs****I/O 8 outputs****Tendency control**

incl. license Tendency_ Control, I/O card and 2 x relay

Metal detectorCan be integrated into the machine

Infographic

Symbols

Unicode

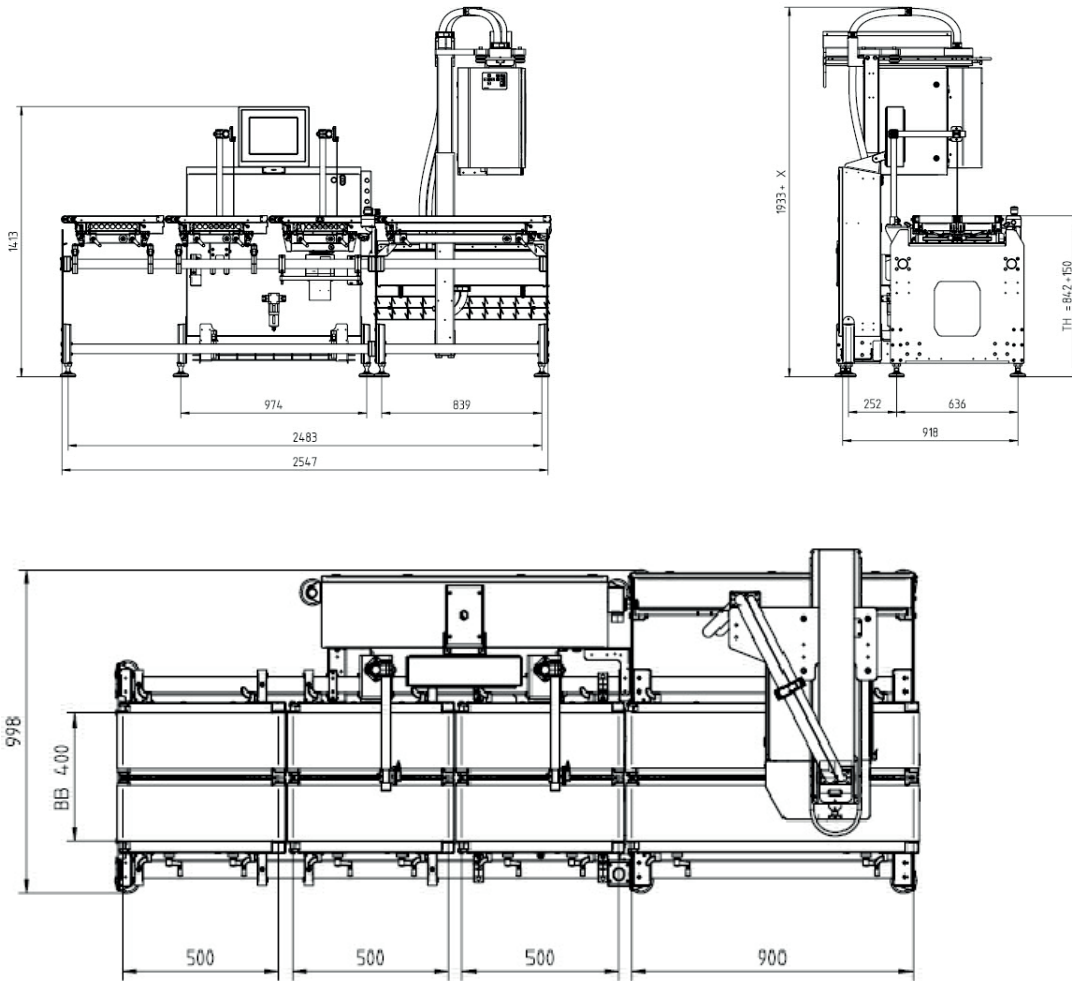


WS Food



Plug-In-Label

Dimensions



Bizerba SE & Co. KG
Wilhelm-Kraut-Straße 65
72336 Balingen
Germany
T +49 7433 12-0
F +49 7433 12-2696
marketing@bizerba.com

www.bizerba.com