

Data Sheet

GLP-Imaxx

BIZERBA

GLP-I maxx ... more features, more convenience, more functionality. Regardless if used as stand-alone printer, total printer or if used for weight-related product labeling, the GLP-Imaxx with its Intel® Atom™-based hardware is the ideal solution for today's and tomorrow's requirements.



More information
High performance
with a wide range of
solutions and options.

Product description

The GLP-Imaxx can be used as a label printer for product labeling in the food processing industry as well as in manufacturing trade and logistics. It is perfectly suitable for dispatch and stock labels. In combination with the Bizerba weighing technology it is the perfect starter kit for manual price labeling.

GLP-Imaxx is suitable for label rolls with a diameter of up to 300 millimeters. Thus retrofitting time is reduced - especially with large labels. The printers are network compatible and can also be controlled directly via the Internet.

Settings and maintenance of the printer unit can be made without need of any tools - reducing costs and increasing print quality. The new PC-based hardware provides more memory space and fast label data processing. By means of an USB port it is easy to run data back-ups and to buffer statistical data. The operating terminal GT-7C with color display can be operated ergonomically and thus reduces operating errors. Optionally, an operating terminal with color display is available.



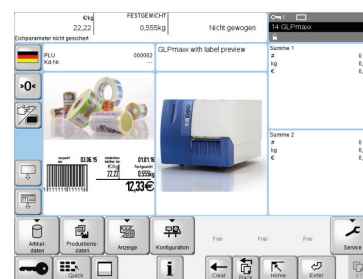
GLP-Imaxx - table-top version with scale

Highlights

- Flexible application options as a stand-alone printer, total printer or for weight-related product labeling
- Operating terminal GT-7C with 7" color display, optionally GT-12E or GT-12C with 12" color touch screen
- Printing of UNICODE fonts
- 2 GB memory on board for article and layout data
- Program updates, line backups, backup and service printouts are possible with the external USB port on the back of the device.
- The internal USB port can be used for logging of process data, e.g. for statistical evaluations.
- Thermal direct and thermal transfer print
- Printing and processing of any one and two-dimensional standard barcodes, among other things data matrix and QR code
- Easy change of label roll (Ø up to 300 mm)
- Servicing of printer unit w/o tools (e.g. replacing thermal printhead, pressure roller)



GLP-Imaxx - standing mount with scale



12" color touch screen, optional

Options

- Thermal transfer device
- Printing mechanism 80 mm (optional width 104 mm)
- Scale connection via I-ADC
- Standing mount
- 12" color touch screen

Bizerba GmbH & Co. KG
Wilhelm-Kraut-Straße 65
72336 Balingen
Germany
T +49 7433 12-0
F +49 7433 12-2696
marketing@bizerba.com

www.bizerba.com