

Fact Sheet

GLPmaxx 160

BIZERBA

GLPmaxx ... more features, more convenience, more functionality. Regardless if used as stand-alone printer, total printer or if used for weight-related product labeling, the GLPmaxx with its PC-based hardware is the ideal solution for today's and tomorrow's requirements.



More Information
High performance with a wide range of solutions and options.

Specifications	Facts	Details
Weighing range LR18 A/M	6 kg / 2 g 15 kg / 5 g 12 kg / 2 g 3/6 kg // 1/2 g 6/15 kg // 2/5 g I-ADC	Minimum load 40 g / verification scale intervals 3000 Minimum load 100 g / verification scale intervals 3000 Minimum load 40 g / verification scale intervals 6000 Minimum load 20 g / verification scale intervals 2 x 3000 Minimum load 40 g / verification scale intervals 2 x 3000 Allows connection of further load receptor
Printing technology	Printing process Resolution Print width Print speed Label output	Thermal direct (optional thermal transfer) 8 dot/mm (optional 12 dot/mm) 80 mm (optional 104 / 168 mm) max. 250 mm/s 172 mm
Printer	Label size Label roll Thermal transfer ribbon	min. 30 mm (W) x 20 mm (L) max. 168 mm (W) x 500 mm (L) Core 40-76 mm, outside max. 150 mm Core diameter 25.4 mm Outer diameter 81 mm
Barcode versions	All standard barcodes	EAN/UPC 8, EAN/UPC 13, EAN/UPC 128, Code 2/5 int. Code 39, Code 128, GS1-128, PDF417, PDF 417 mit AI, GS1 DataBar Omni, GS1 DataBar, Data Matrix, QR-Code
Supply voltage	230 V / 50-60 Hz, 110 V / 60 Hz	
Operating temperature	0 °C to 40 °C	Standby to -10 °C
Humidity	20-90 % non-condensing	
Protection class	IP 20	
Memory	2 GB	Compact flash card
Weight	13.48 kg	
Operating panel	Operation with keyboard and color display 7"	Optional GT-12C LCD display 12" with touch screen function

Options	Facts	Details
Thermal transfer device		Printing is done via thermal transfer ribbon.
GLP-WA	Option automatic price labeling scale	This option is required if the product to be weighed is supplied via an upstream conveyor belt of the scale.
I-ADC	Internal analog / digital converter	For connection of analog load receptors up to 56 ohm.

Printer driver

For print jobs sent straight from Office programs, such as Word or Power Point.

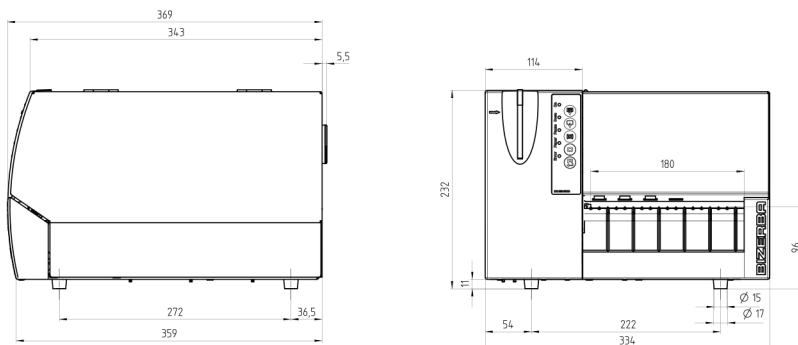
Windows Vista, Windows 7, Windows 8, Windows 8.1, Windows Server 2008, Windows Server 2008R2

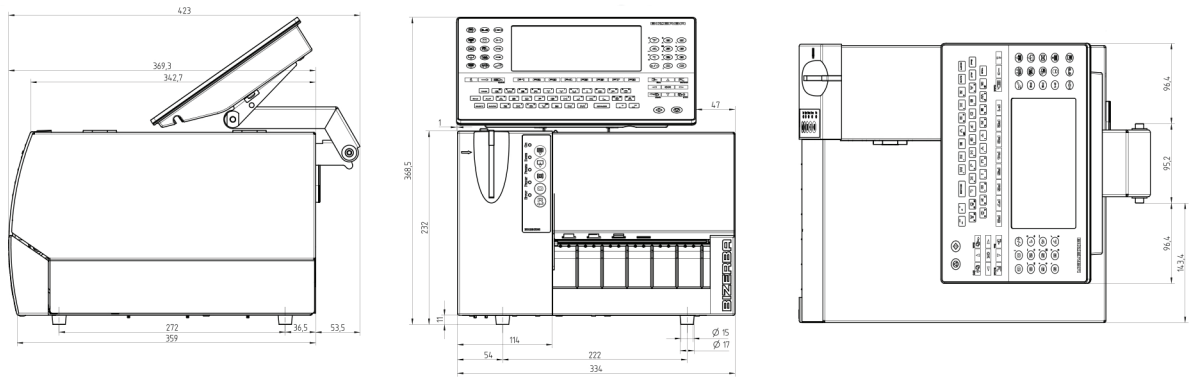
Infographic



Symbols

Dimensions





Members of the Bizerba Group

Bizerba GmbH & Co. KG

Wilhelm-Kraut-Straße 65
72336 Balingen
Deutschland
T +49 7433 12-0
F +49 7433 12-2696
marketing@bizerba.com

www.bizerba.com